

SEA Electric Actuator



Enclosure:

- IP 67: Waterproof and dust-proof enclosure
- NEMA 4X: Waterproof and dust-proof enclosure
- Material: Dry powder coating aluminum alloy

Motor:

- Standard extended duty cycle induction motor F insulation class for all models
- Built-in thermal protection (275°F) prevents motor burning out
- Standard Unit is 120 VAC
- Standard motors are 30% duty rated

Position Indicator:

- All models except SEA-1 have continuous mechanical position indicator on the top of the actuator cover

Manual Override:

- Non-clutch design, the manual operation can be operated without any lever, clutch or brake upon power outage
- When electric motor is operating, manual hand-wheel will not rotate for safety purposes

Gear Train:

- High alloy steel gear trains provide self-locking function to avoid valve back drive
- Gear trains have been already lubricated sufficiently with anti-high temperature lubricant at the factory

Working Conditions:

- Ambient temperature: -22°F to 149°F
- Humidity: 30% to 95%

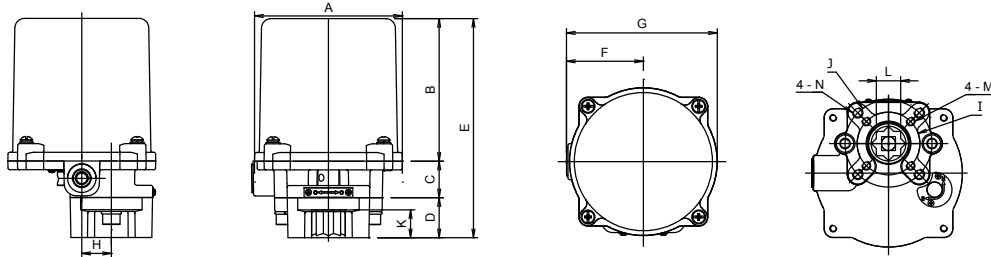
Various Options:

- Space heater
- Additional limit switches (2 units)
- Potentiometer unit (1K Ohm or 5K Ohm)
- Local control unit (local/remote, on/off)
- Conduit entrance (1/2" PS, 3/4" PF, 1/2" NPT)
- Torque switches (2 units)
- Current position transmitter (output 4-20mA)
- Modulating controller (4-20mA, 1-5 VDC, 2-10 VDC)
- Various voltages
- Nylon enclosure material
- Thermostat
- 75% duty rating

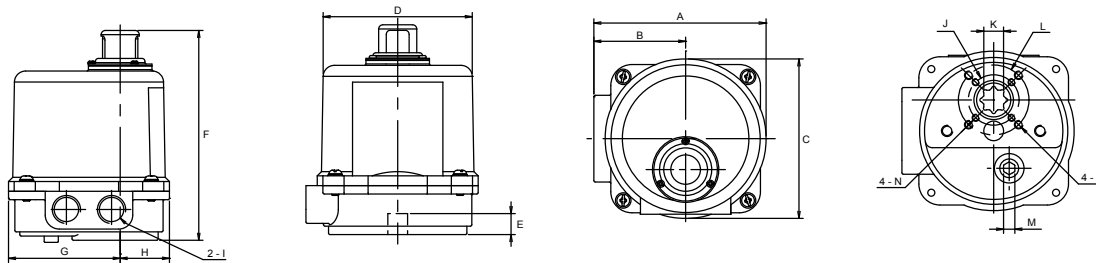
Certifications:

- CE
- CSA (Conforming to the test standard for outdoor use)

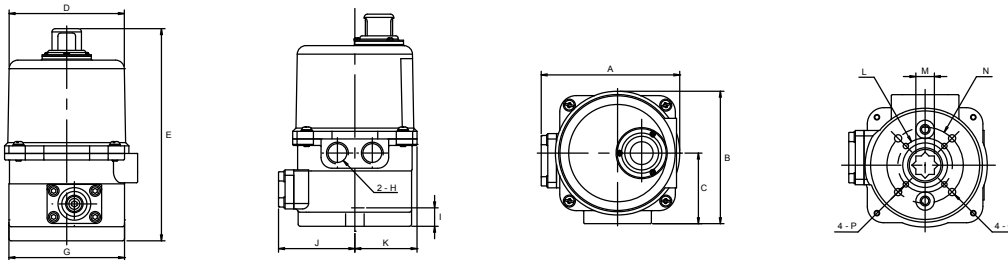
SEA Electric Actuator Dimensions



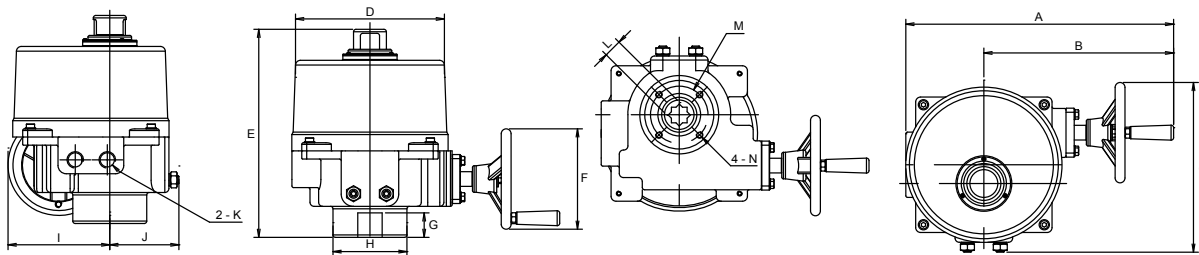
SEA 1															
Unit	A	B	C	D	E	F	G	H	I	J	K	L	M	N	Flange Type
in	3.35	3.23	0.83	0.90	4.96	1.73	3.42	0.67	1.42	1.97	0.63	0.55	M5x0.8	M6x1.0	F03 or F05
mm	85	82	21	23	126	44	87	17	36	50	16	14	M5x0.8	M6x1.0	



SEA 3																
Unit	A	B	C	D	E	F	G	H	I	J	K Max	L	M	N	P	Flange Type
in	4.80	2.56	4.49	4.17	0.59	5.9	3.11	1.38	1/2 PS	1.42	0.551	1.97	0.2	M5x0.8	M6x1.0	F03 or F05
mm	122	65	114	106	15	150	79	35	1/2 PS	36	14	50	8	M5x0.8	M6x1.0	

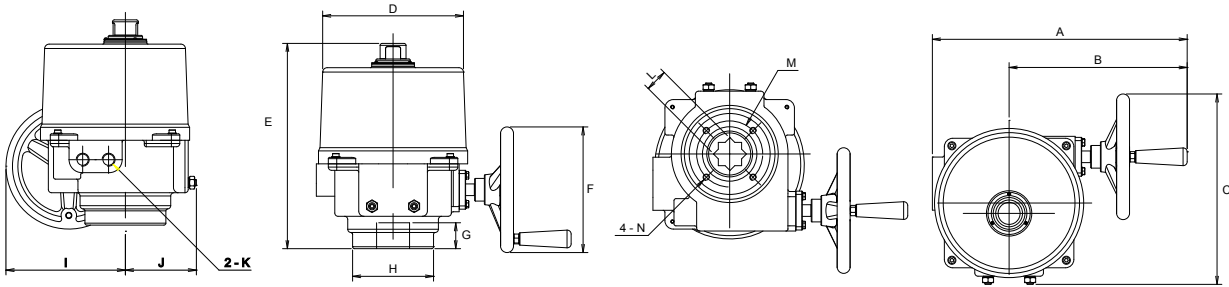


SEA 4																
Unit	A	B	C	D	E	G	H	I	J	K	L	M	N	P	Q	Flange Type
in	5.0	4.8	2.56	4.02	7.71	4.17	1/2 PS	0.79	2.76	2.24	1.97	0.669	2.76	M6x1.0	M8x1.25	F05 or F07
mm	127	122	65	102	196	106	1/2 PS	20	70	57	50	17	70	M6x1.0	M8x1.25	



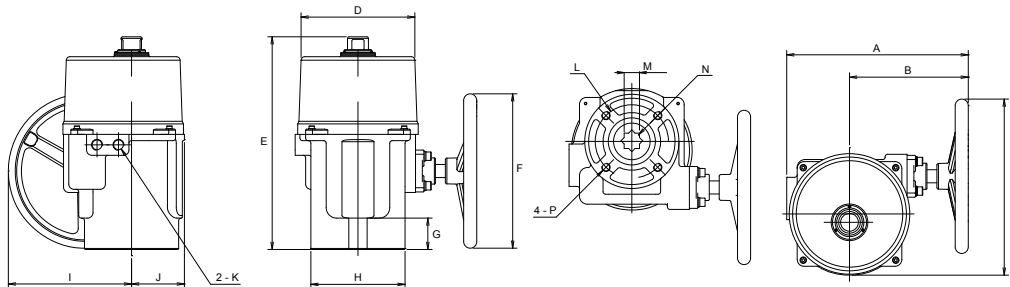
SEA 8 AND SEA 13															
Unit	A	B	C	D	E	F	G	H	I	J	K	L Max	M	N	Flange Type
in	12.83	9.09	8.15	7.13	10.04	4.76	1.18	3.54	4.88	3.31	1/2 PS	0.867	2.76	M8x1.25	F07
mm	326	231	207	181	255	121	30	90	124	84	1/2 PS	22	70	M8x1.25	

SEA Electric Actuator Dimensions Cont.



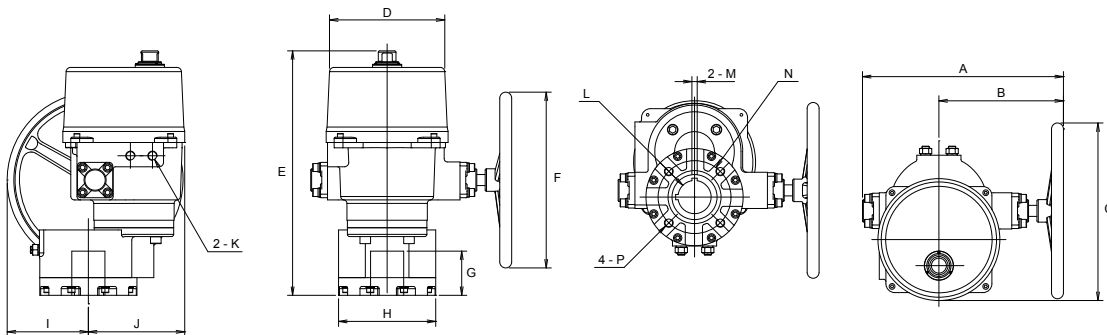
SEA 35, SEA 44 AND SEA 57

Unit	A	B	C	D	E	F	G	H	I	J	K	L	M	N	Flange Type
in	15.51	10.82	11.50	8.54	12.48	7.52	1.57	4.97	7.24	4.33	1/2 PS	1.42	4.01	M10*1.5	F10
mm	394	275	292	217	317	191	40	125	184	110	1/2 PS	36	102	M10*1.5	



SEA 88 AND SEA 132

Unit	A	B	C	D	E	F	G	H	I	J	K	L	M	N	P	Flange Type
in	13.66	8.94	13.23	8.54	15.98	11.61	2.36	7.09	9.25	3.98	1/2 PS	4.92	1.38	1.38	M12*1.75	F12 or F14
mm	347	227	336	217	406	295	60	180	235	101	1/2 PS	125	35	35	M12*1.75	



SEA 177, SEA 221, SEA 265 AND SEA 310

Unit	A	B	C	D	E	F	G	H	I	J	K	L	M	N	P	Flange Type
in	17.91	11.10	15.83	10.27	21.81	15.67	3.94	8.66	7.24	8.58	1/2 PS	2.95	0.47	6.50	M20*2.5	F16
mm	455	282	402	261	554	398	100	220	184	218	1/2 PS	75	12	165	M20*2.5	

SEA Technical Information

Model	Power (watts)	Max Torque (In/lb)	Speed (Sec/90°)	Weight (lb)	Manual Override	Mounting Flange
SEA 1	5W	132	19	3.3	Lever	F03 / F05
SEA 3	10W	310	12	4.4	Lever	F03 / F05
SEA 4	10W	443	20	6.6	Lever	F05 / F07
SEA 8	40W	797	15	24.2	Hand-wheel	F07
SEA 13	40W	1328	22	24.2	Hand-wheel	F07
SEA 35	80W	3540	16	44	Hand-wheel	F10
SEA 44	80W	4425	22	44	Hand-wheel	F10
SEA 57	80W	5750	28	44	Hand-wheel	F10
SEA 88	120W	8850	46	71	Hand-wheel	F12 / F14
SEA 132	120W	13275	46	71	Hand-wheel	F12 / F14
SEA 177	180W	17700	58	157	Hand-wheel	F16
SEA 221	180W	22125	58	157	Hand-wheel	F16
SEA 265	180W	26550	58	159	Hand-wheel	F16
SEA 310	220W	31000	58	159	Hand-wheel	F16

Fig: SEA3 - 2
Description: SEA3 - 24V

How To Order	
SEA Series	Options
SEA1	1 220V*
SEA3	2 24 VAC*
SEA4	3 12 VDC*
SEA8	4 24 VDC*
SEA13	AS Auxiliary Switches
SEA 35	FP Feedback Potentiometer*
SEA 44	CR Control Relays*
SEA 57	HT Heater & Thermostat
SEA 88	PP Proportional Positioner*
SEA 132	FT Feedback Transmitter*
SEA 177*	TR Timers*
SEA 221*	TS Torque Sensor*
SEA 265*	*POA
SEA 310*	